



TROPICAL DEPRESSION HARVEY BRIEFING

10:15 PM CDT
Wednesday, August 23, 2017

Prepared by:
Lara Beal



Situation Overview



Corpus Christi

WEATHER FORECAST OFFICE

Tropical Depression Harvey

- No changes to Watches.
- Hurricane Watch remains in effect from north of Port Mansfield to San Luis Pass
- Storm Surge Watch remains in effect from Port Mansfield to High Island.
- Tropical Storm Force Winds and surge impacts expected to begin Friday evening with landfall possible along mid Coast Friday Night or Saturday morning.
- Hurricane Warnings could be tomorrow issued (Thursday).

Situation Overview



Corpus Christi
WEATHER FORECAST OFFICE

Tropical Depression Harvey

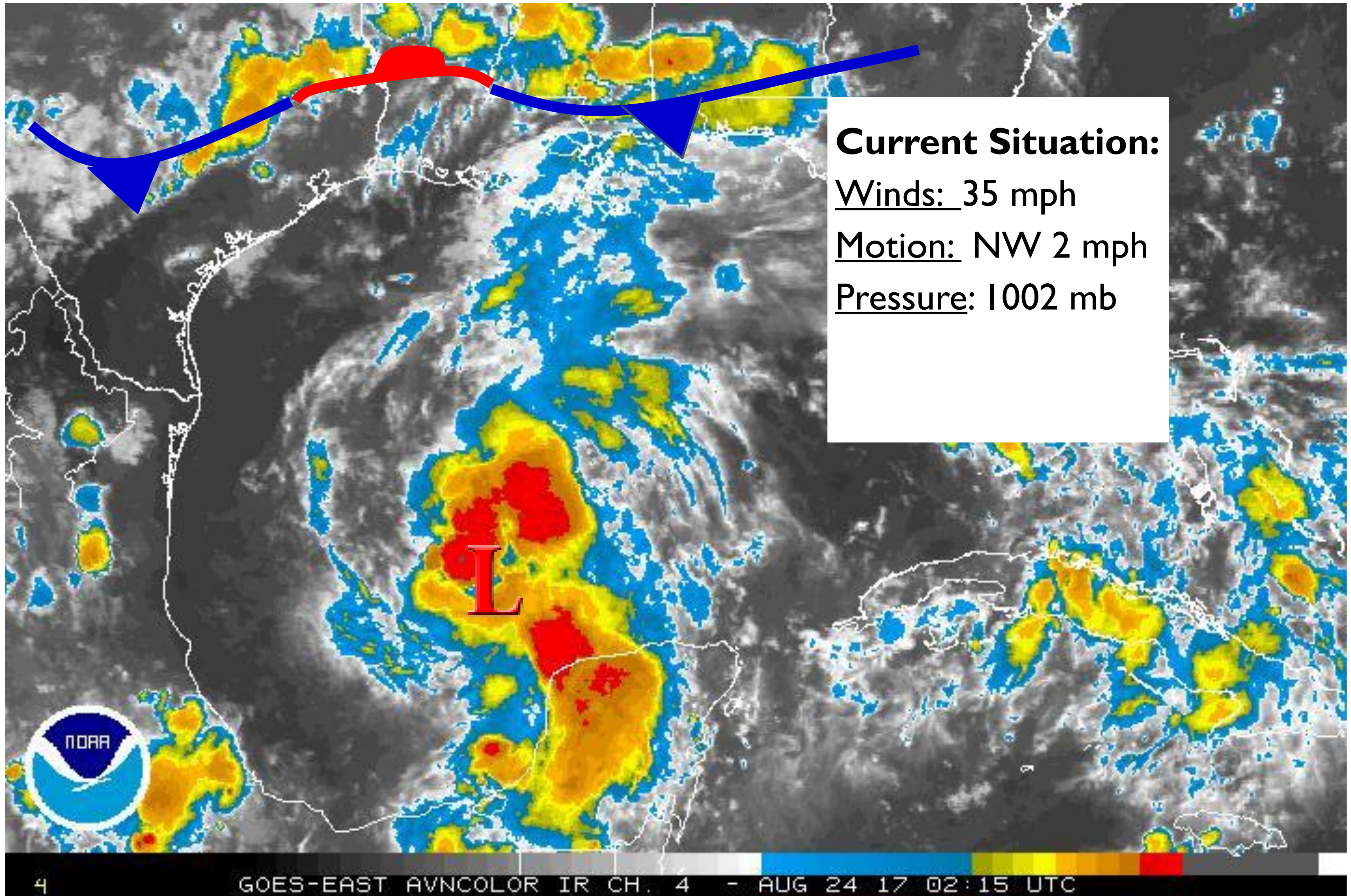
- Forecast is for Category I Hurricane at landfall. Reasonable worst case for planning purposes Cat 2.
- Peak Storm Surge Flooding 4-6 Feet above ground level along and right of center. Still very dependent on eventual track.
- **Heavy rainfall/flooding will be primary concern as the system is expected to stall or meander across the area through weekend.** Rainfall totals 6 to 12 inches with isolated higher amounts across the southern Coastal Bend, and 10 to 15 inches with isolated amounts of 20 inches+ along the northern Coastal Bend and Victoria Crossroads.

Current Satellite View



Corpus Christi
WEATHER FORECAST OFFICE

Tropical Depression Harvey

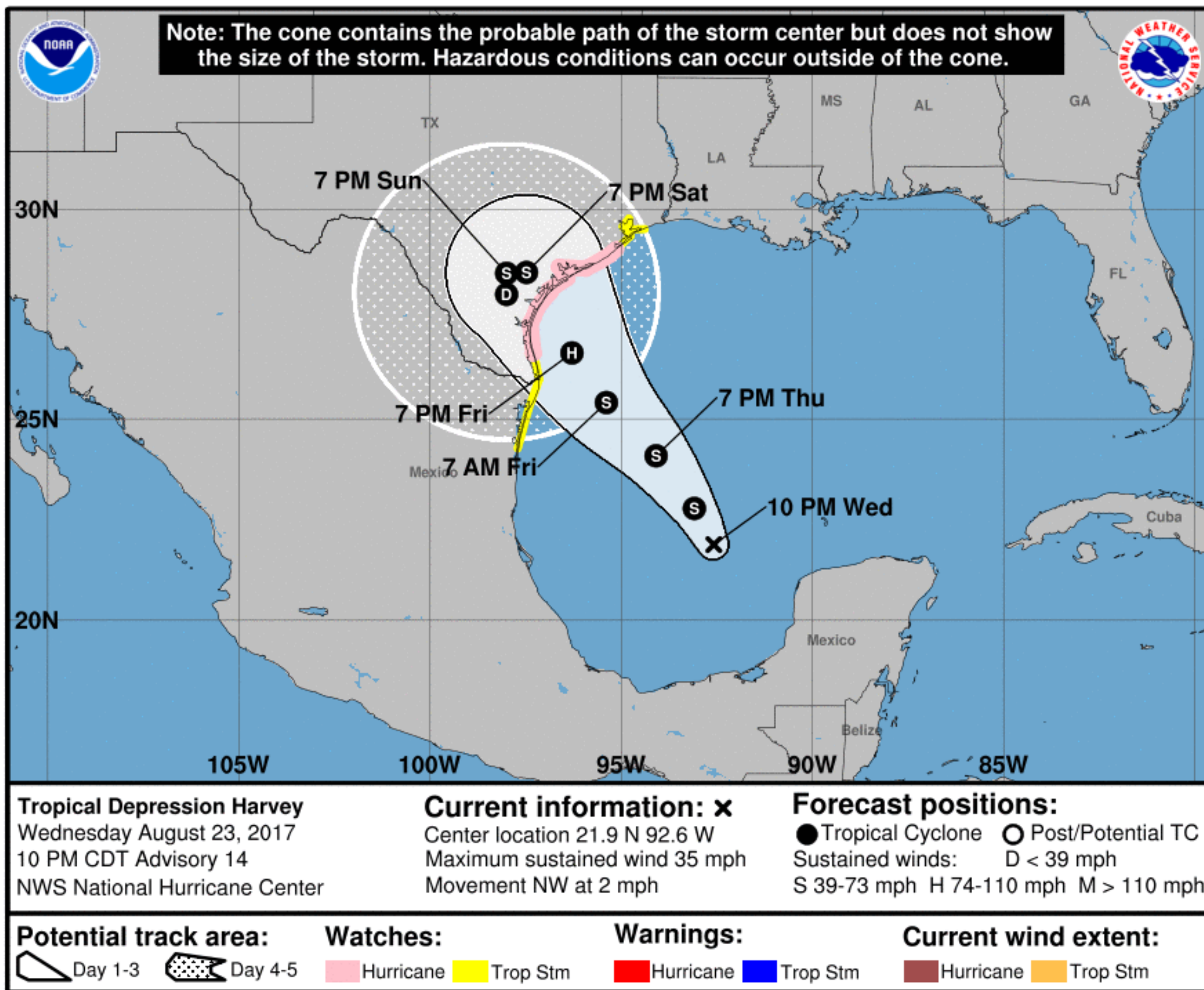


Situation Overview



Corpus Christi
WEATHER FORECAST OFFICE

Tropical Depression Harvey



- T.D. Harvey has max sustained winds 35 mph.
- Do not focus on exact forecast track. Plan for potential for Hurricane force winds in Hurricane Warning Area.
- Wind impacts, Storm Surge and Flooding rains can occur outside of cone area.

NOTE: Do not focus on the exact track. Impacts can occur well outside the area enclosed by the cone.

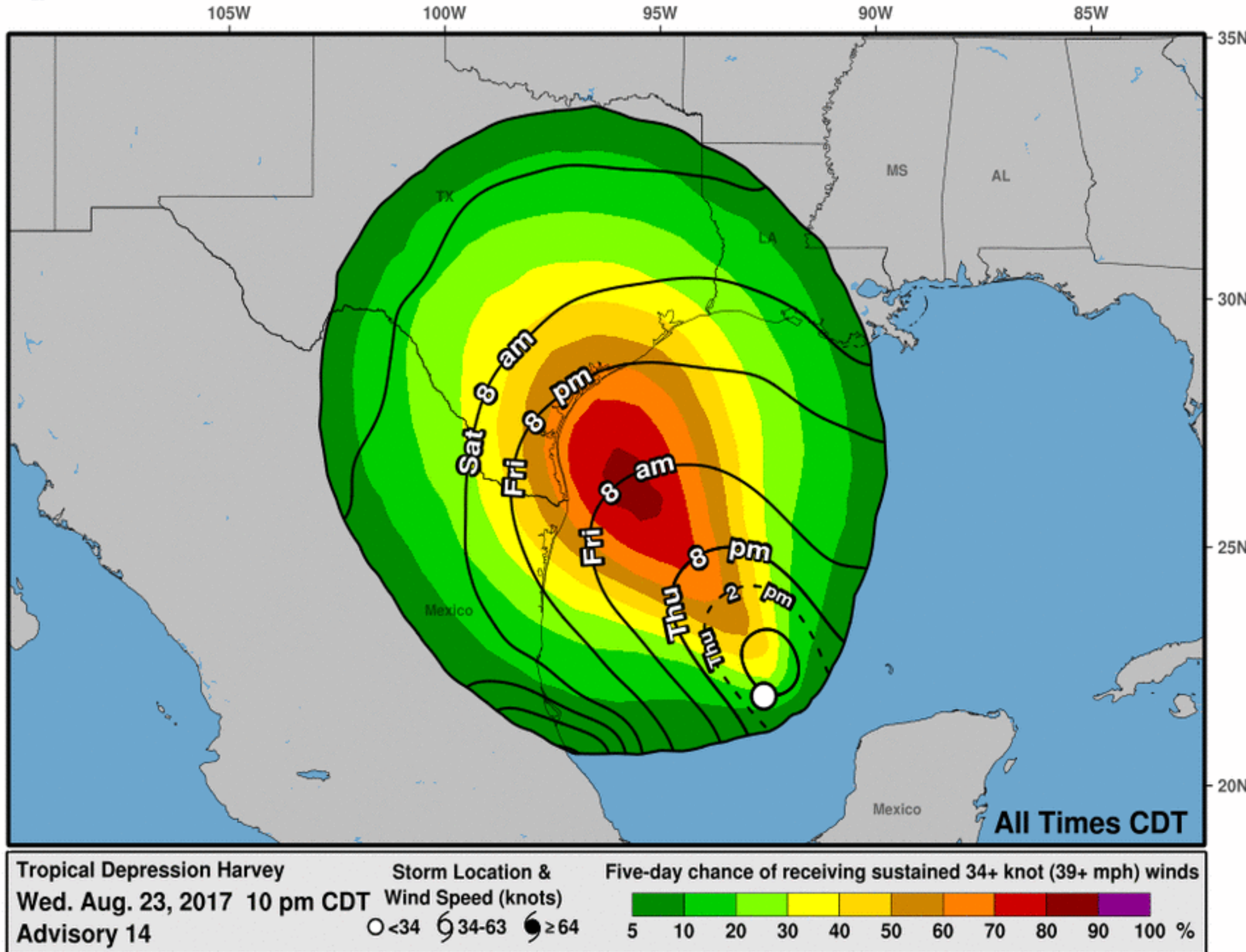
Earliest Time of Arrival



Corpus Christi
WEATHER FORECAST OFFICE

Tropical Depression Harvey

Most Likely Arrival Time of Tropical-Storm-Force Winds



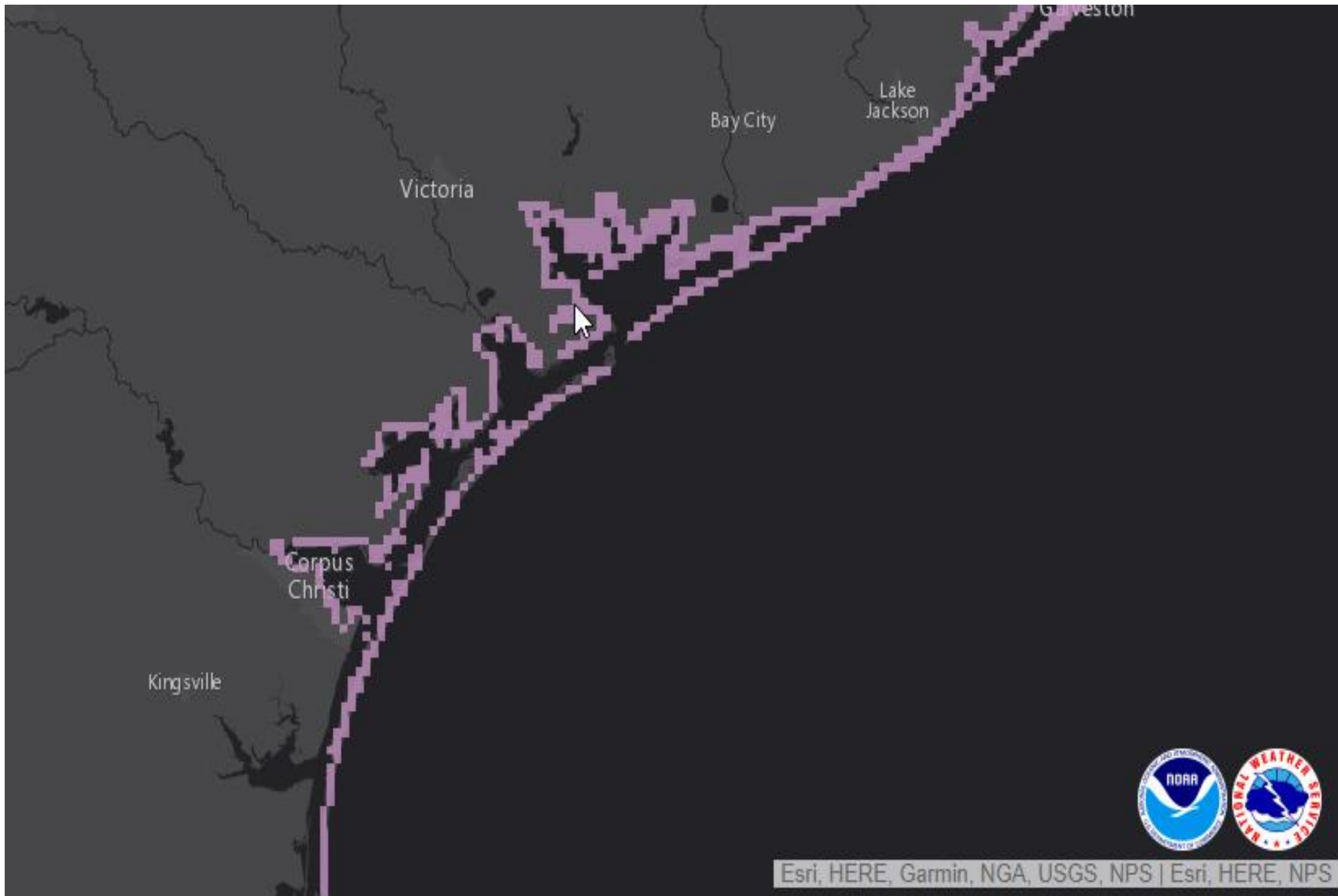
- The most likely time of arrival of Tropical Storm Force Winds for the Mid Texas Coast is now Friday evening.
- However, the earliest reasonable time this area could see Tropical Storm Force Winds will be Friday morning

Potential Storm Surge



Corpus Christi
WEATHER FORECAST OFFICE

Tropical Depression Harvey



Storm Surge Warning
Storm Surge Watch

Areas of greatest risk:

- Plan for peak storm surge flooding of 4 to 6 feet above ground level along and to the right of where the center crosses the coast.

Timing

- Storm surge inundation could begin as early as Friday Morning.

Storm Surge Watch from Port Mansfield to High Island

Potential Storm Surge



Corpus Christi
WEATHER FORECAST OFFICE

Tropical Depression Harvey

- **Key locations that could flood with 4-6 foot storm surge:**
 - Low spots along Park Road 22 and Highway 361 on Mustang Island.
 - Low spots on Highway 181 between North Beach and Portland including portions of North Beach.
 - Corpus Christi T-Heads
 - Waterfront property along: Indianola, Port O'Connor, Fulton and Rockport.

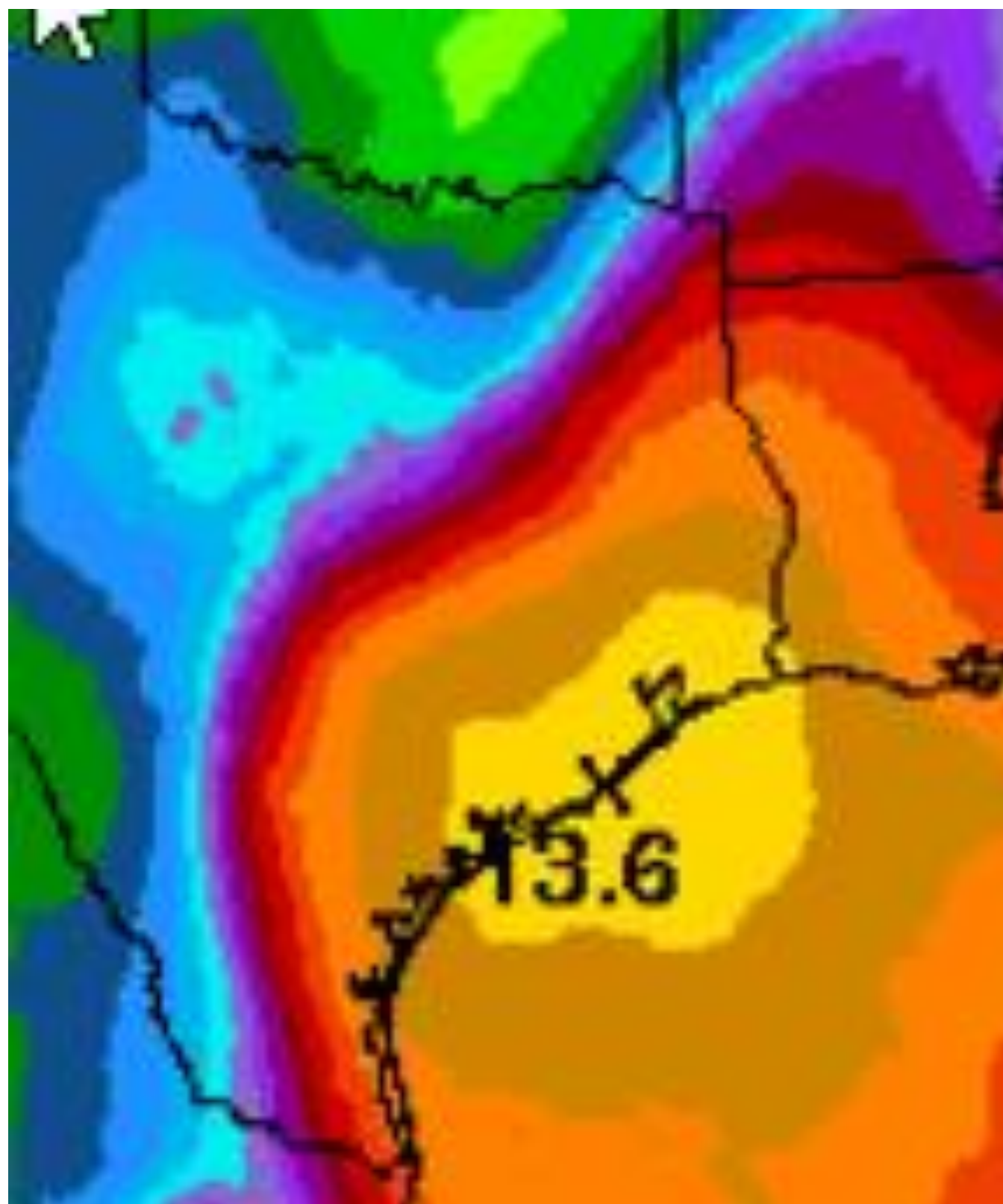
Expected Storm Total Rainfall



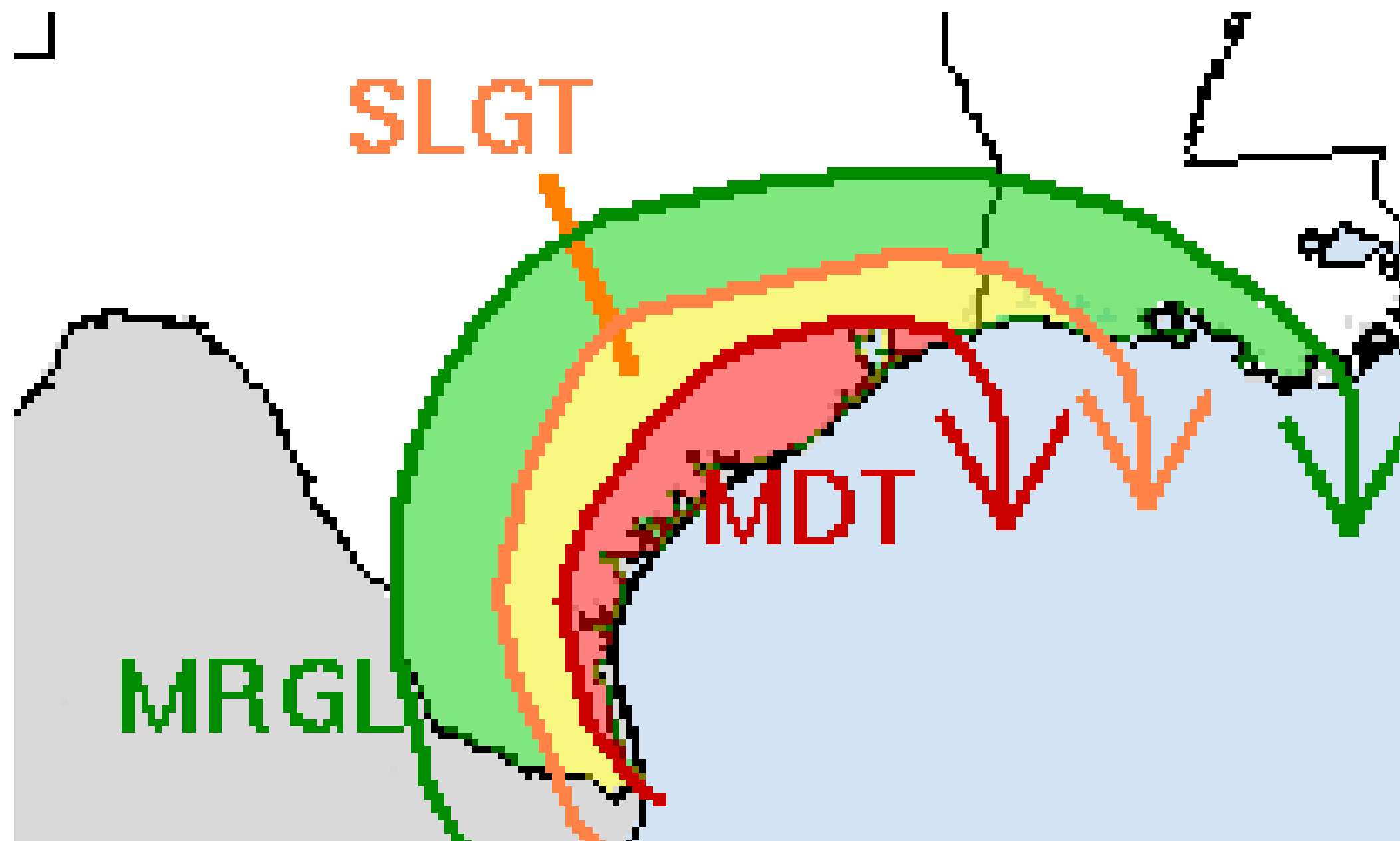
Corpus Christi
WEATHER FORECAST OFFICE

Tropical Depression Harvey

Storm total rainfall



Excessive Rainfall Outlook



Storm Total Rainfall amounts of 10-15" isolated amounts of 20" or more possible including Friday through the weekend

Summary

Tropical Depression Harvey



Corpus Christi

WEATHER FORECAST OFFICE

- Tropical Storm Force Winds and surge impacts expected to begin Friday evening with landfall possible along mid Coast Friday Night or Saturday morning.
- Forecast is for Category I Hurricane at landfall. Reasonable worst case for planning purposes Cat 2.
- Peak Storm Surge Flooding 4-6 Feet above ground level along and right of center. Uncertainty on exactly where this will occur.
- Heavy rainfall/flooding will be primary concern as the system is expected to stall or meander across the area through weekend. Rainfall totals 6 to 12 inches with isolated higher amounts across the southern Coastal Bend, and 10 to 15 inches with isolated amounts of 20 inches+ along the northern Coastal Bend and Victoria Crossroads.