

RESOLUTION NO. 2016-16

**RESOLUTION SETTING A PUBLIC HEARING ON A PROPOSED
ANNEXATION**

A RESOLUTION OF THE CITY OF ROCKPORT, TEXAS, SETTING A DATE, TIME, AND PLACE FOR PUBLIC HEARINGS ON THE PROPOSED ANNEXATION BY THE CITY OF ROCKPORT, TEXAS, OF 212 ACRES, MORE OR LESS, OUT OF PORTIONS OF THE JOSEPH F. SMITH SURVEY A-198, R. J. TOWNS SURVEY A-206, PAUL MCCOMBS SURVEY A-137, AND THE C.W. EGERY SURVEY A-62, AND AUTHORIZING AND DIRECTING PUBLICATION OF NOTICE OF SUCH PUBLIC HEARINGS AND DIRECTING CITY STAFF TO PREPARE ANNEXATION SERVICE PLAN.

WHEREAS, §43 of the Texas Local Government Code and Article I, Section 3 of the Charter of the City of Rockport, Texas, an incorporated city, authorizes the annexation of territory, subject to the laws of this state;

WHEREAS, the City has the desire to extend its boundaries to provide for the strategic management of growth of the City, and to better manage the provision of public services to residents of the area;

BE IT RESOLVED BY THE CITY COUNCIL OF THE CITY OF ROCKPORT, TEXAS:

SECTION 1. On the 8th day of November, 2016, at 1:30 p.m. and 6:30 p.m. in the City Council Chambers of the City Hall of the City of Rockport, Texas, the City Council will hold public hearings giving all interested persons the right to appear and be heard on the proposed annexation by the City of Rockport, Texas of the following described property, to-wit:

DESCRIPTION OF A 212 ACRES OF LAND, MORE OR LESS, OUT OF PORTIONS OF THE JOSEPH F. SMITH SURVEY A-198, R. J. TOWNS SURVEY A-206, PAUL MCCOMBS SURVEY A-317, AND THE C. W. EGERY SURVEY A-62, WITH SAID 212 ACRES, MORE OR LESS, BEING MORE PARTICULARLY DESCRIBED BY METES AND BOUNDS AS FOLLOWS:

BEGIN at the common Northeast corner Lot 14, Peninsula Oaks Subdivision, Unit 3, as shown by plat of record in Volume 3, Page 34, Map Records of Aransas County, Texas, and the Northwest corner of Lot 15A, Peninsula Oaks Subdivision, Unit 3, as shown by a replat in Volume 4, Page 137, Map Records of Aransas County, Texas, with said point being the NORTHWEST corner and PLACE OF BEGINNING of this description;

THENCE, in a Southeasterly direction and following the Northerly boundary line of said Lot 15A, then Lot 16 of said Peninsula Oaks Subdivision, Unit 3, and crossing Texas State Highway No. 35 Relief Route a distance of approximately 1330 feet to a point for the Northeast corner of Lot 18, Peninsula Oaks Subdivision, Unit 3, with said point being the NORTHEAST corner of this description;

THENCE, in a Southwesterly direction a distance of approximately 2307 feet to a point for the Southeast corner of a 31.398 acre tract out the C. W. Egery Survey A-62 conveyed to Buffalo Park, Inc. under Clerk's File No. 245633, Official Public Records of Aransas County, Texas, with said point being an EXTERIOR corner of this description;

THENCE, in a Northwesterly direction a distance of approximately 632 feet to a point for the common Northwest corner of Lot 17 and Northeast corner of Lot 18, Block 253, Foor & Swickheimer Subdivision, as shown by plat of record in Volume 1, Page 28, Map Records of Aransas County, Texas, with said point being an INTERIOR corner of this description;

THENCE, in a Southwesterly direction along and with the Easterly line of said Lot 18 and crossing Kresta Lane a distance of approximately 627 feet to a point on the Southerly R.O.W. line of Kresta Lane, with said point being the an EXTERIOR corner of this description;

THENCE, in a Northwesterly direction along and with the Southerly R.O.W. line of Kresta Lane a distance of approximately 232 feet to a point for the common Northwest corner of Lot 28 and the Northeast corner of Lot 29, Block 252 of said Foor & Swickheimer Subdivision with said point being an INTERIOR corner of this description;

THENCE, in a Southwesterly direction along and with the Easterly line of Lots 29 and 39, Block 252 of said Foor & Swickheimer Subdivision and crossing Twelfth Street for an approximate distance of 2010 feet to a point on the Southerly R.O.W. line of Twelfth Street and being the Northeast corner of Lot 49, Block 251 of the Foor & Swickheimer Subdivision with said point being the SOUTHEAST corner of this description;

THENCE, in a Northwesterly direction along and with the Southerly R.O.W. line of Twelfth Street a distance of approximately 780 feet to a point in the cut-back R.O.W. line of Texas State Highway No. 35 Relief Route with said point being Northwest corner of Lot 50, Block 251 of said Foor & Swickheimer Subdivision and an INTERIOR corner of this description;

THENCE, in a Southwesterly direction of said cut-back R.O.W. line of Texas State Highway No. 35 Relief Route a distance of approximately 52 feet to a point on the Easterly line of a portion of Lot 20, Sartain & Montgomery Subdivision of

the Paul McCombs Survey A-317 as shown by plat of record in Volume 1, Page 34, Map Records of Aransas County, Texas, with said point being an EXTERIOR corner of this description;

THENCE, in a Southwesterly direction of said cut-back R.O.W. line of Texas State Highway No. 35 Relief Route a distance of approximately 180 feet to a point on the Westerly line of a portion Lot 21 of said Sartain & Montgomery Subdivision with said point being an INTERIOR corner of this description;

THENCE, in a Southwesterly direction along and with the Easterly R.O.W. line of Texas State Highway No. 35 Relief Route a distance of approximately 202 feet to a point for the Southwest corner of a portion of Lot 22 of said Sartain & Montgomery Subdivision with said point being an EXTERIOR corner of this description;

THENCE, in a Westerly direction and crossing Texas State Highway No. 35 Relief Route a distance of approximately 621 feet to a point at the intersection of the Easterly R.O.W. line of Holly Road with the Westerly R.O.W. line of Texas State Highway No. 35 Relief Route with said point being the SOUTHWEST corner of this description;

THENCE, in a Northwesterly direction and crossing Holly Road a distance of approximately 42 feet to a point for the Southeast corner of Lot 41 of said Sartain and Montgomery Subdivision and being on the Westerly R.O.W. line of Holly Road with said point being an EXTERIOR corner of this description;

THENCE, in a Northeasterly direction along and with the Westerly R.O.W. line of Holly Road a distance of approximately 2032 feet to a point for the Northeast corner of Lot 23 of said Sartain and Montgomery Subdivision with said point being an INTERIOR corner of this description;

THENCE, in a Northwesterly direction along and with the Southerly R.O.W. line of Holly Road a distance of approximately 30 feet to a point for the Southeast corner of Lot 2-A of said Sartain and Montgomery Subdivision with said point being an EXTERIOR corner of this description;

THENCE, in a Northeasterly direction along and with the Westerly R.O.W. line of Holly Road a distance of approximately 273 feet to a point for the Northeast corner of said Lot 2-A of said Sartain and Montgomery Subdivision with said point being an EXTERIOR corner of this description;

THENCE, in a Northeasterly direction along and with the Northerly R.O.W. line of Holly Road a distance of approximately 410 feet to a point for the Southeast corner of Lot 13A, Peninsula Oaks Subdivision, Unit 5, as shown by a replat of record in Volume 5, Page 211, Map Records of Aransas County, Texas, with said point being an INTERIOR corner of this description;

THENCE, in a Northeasterly direction along and with the Westerly R.O.W. line of Alexander Drive a distance of approximately 1230 feet to a point at its intersection with the Southerly R.O.W. line of St. Francis Circle with said point being an EXTERIOR corner of this description;

THENCE, in a Northeasterly direction and crossing St. Francis Circle a distance of approximately 65 feet to a point for the Southwest corner of Lot 18, Club Lake Estates, as shown by plat of record in Volume 3, Page 79, Map Records of Aransas County, Texas, with said point being an EXTERIOR corner of this description;

THENCE, in a Southeasterly direction along and with the Northerly R.O.W. line of St. Francis Circle a distance of approximately 770 feet to a point with its intersection with the Westerly R.O.W. line of St. Francis Circle and with said point being the Southeast corner of Lot 15 of said Club Lake Estates and an INTERIOR corner of this description;

THENCE, in a Northeasterly direction along and with the Westerly R.O.W. line of St. Francis Circle a distance of approximately 1005 feet to a point at its intersection with the Southerly R.O.W. line of Griffith Drive and being the Northeast corner of Lot 7 of the said Club Lake Estates and being an EXTERIOR corner of this description;

THENCE, in a Northeasterly direction and crossing Griffith Drive a distance of approximately 63 feet to a point for the Southwest corner of Lot 14A, Peninsula Oaks Subdivision, Unit 3, as shown by a replat of record in Volume 4, Page 137, Map Records of Aransas County, Texas, with said point being an INTERIOR corner of this description;

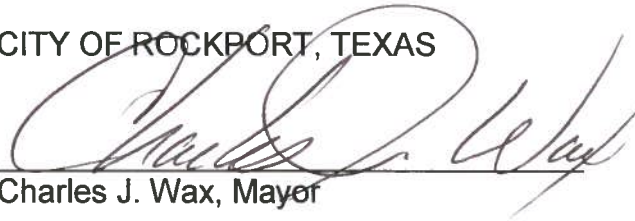
THENCE, in a Northeasterly direction a distance of approximately 508 feet to the PLACE OF BEGINNING and containing 212 acres or 9,241,648 square feet of land, more or less. [As shown on Exhibit B attached hereto.]

SECTION 2. The Mayor and Council of the City of Rockport, hereby authorize and direct that notice of such public hearings to be published once in a newspaper having general circulation in the City and in the above described territory, not more than twenty days nor less than ten days prior to the date of such public hearings, in accordance with the Municipal Annexation Act.

SECTION 3. The Council hereby directs the City Staff to prepare the necessary Service Plan for the above identified property, in accord with State law, and prior to the first public hearing date, provided herein.

PASSED AND APPROVED this the 27th day of September, 2016.

CITY OF ROCKPORT, TEXAS



Charles J. Wax, Mayor



ATTEST:



Teresa Valdez, City Secretary

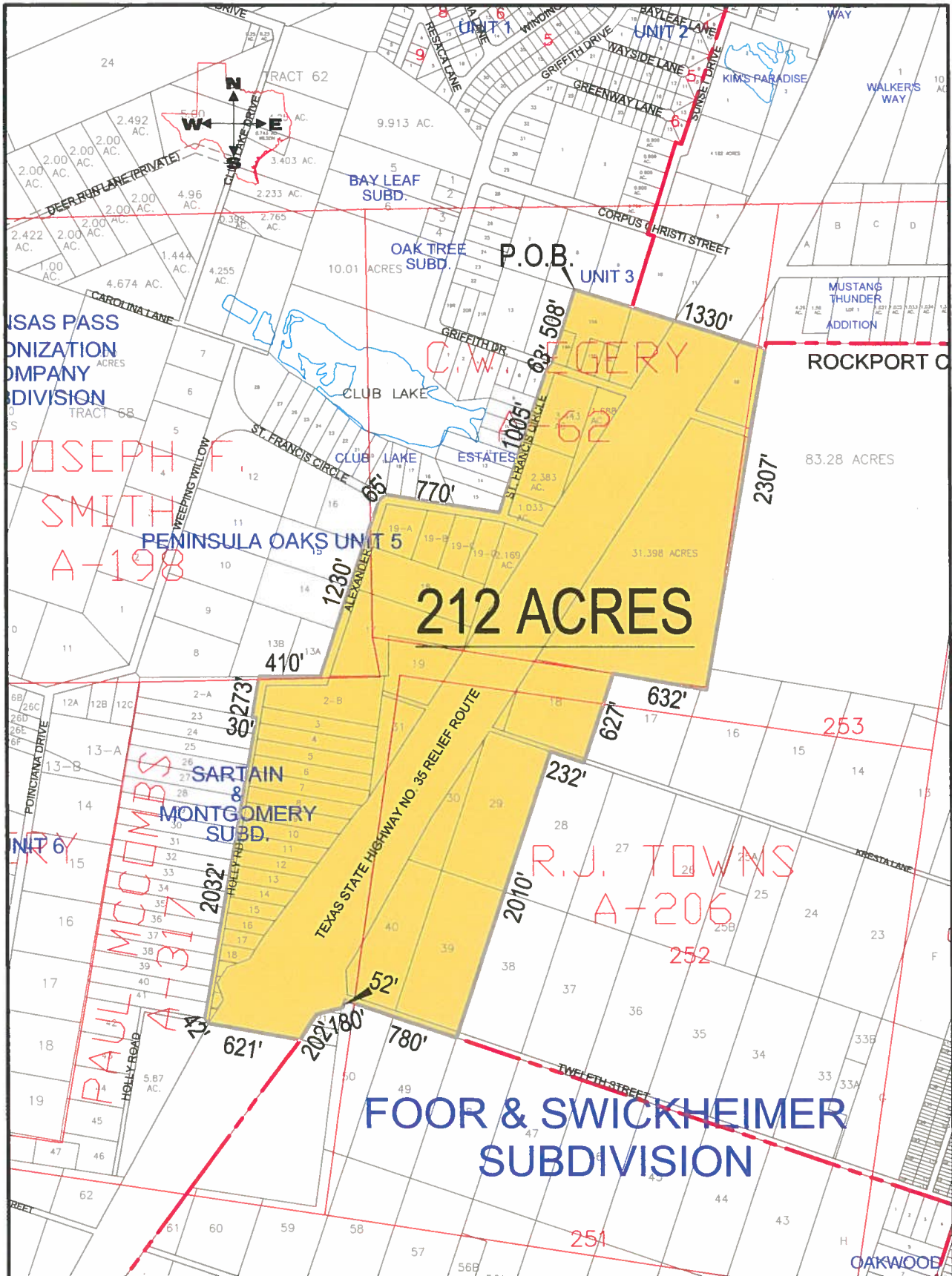


EXHIBIT "B"

PLAT SHOWING A 212 ACRE TRACT OUT OF PORTIONS OF THE C.W. EGERY SURVEY A-62,
 PAUL MCCOMBS SURVEY A-317, R.J TOWNS SURVEY A-206, AND THE JOSEPH F. SMITH SURVEY A-198
 TO BE ANNEXED BY THE CITY OF ROCKPORT, ARANSAS COUNTY, TEXAS

NOTE: THIS AREA HAS NOT BEEN SURVEYED ON THE GROUND AND IS APPROXIMATE AS COMPUTED
 BY USING CAD ON THE CITY OF ROCKPORT MAP GENERATED BY GRIFFITH & BRUNDRETT,
 SURVEYING & ENGINEERING, INC.

G Griffith & Brundrett
 Surveying & Engineering, Inc.
 411 S. Pearl St., P.O. Box 2322
 Rockport, Texas 78301
 ☎ 361-729-6479
 ☎ 361-729-7933
 ✉ jerryb@gbsurveyor.com
 🌐 www.gbsurveyor.com