

NOTICE OF PUBLIC HEARING

Notice is hereby given that the first and second public hearing of a proposed annexation area described below will be held by the City Council of the City of Rockport, Texas, at **1:30 p.m.** and **6:30 p.m.** on **Tuesday, June 27, 2017**, in the Rockport City Hall Council Chambers, located at 622 E. Market, Rockport, Texas for all persons interested in the proposed annexation. All persons and interested parties shall have the right to appear and be heard at said time and place.

This will be the first and second of two public hearings as required by Texas Local Government Code Section 43.063. The purpose of the public hearing is to consider the proposed annexation of the following described territory. The proposed annexation boundary is as described herein and as depicted on Exhibit "B":

DESCRIPTION OF 176 ACRES OF LAND, MORE OR LESS, WITH SAID 176 ACRES BEING OUT OF PORTIONS OF THE THOMAS GREEN SURVEY A-72, JOHN W. PAUP SURVEY A-179 AND A-180, T. T. WILLIAMSON SURVEY A-221, T. B. REEVES SURVEY A-323 AND THE JOHN G. SMITH SURVEY A-239, WITH SAID 176 ACRES OF LAND, MORE OR LESS, BEING MORE PARTICULARLY DESCRIBED BY METES AND BOUNDS AS FOLLOWS:

BEGIN at the point of intersection of South R.O.W. line of Alamito Street and the West R.O.W. line of Terry Street, for the Northeast corner of Block 220, Smith and Wood Division, as shown by plat of record in Volume "E", Pages 272-273, Deed Records of Aransas County, Texas, and being the most SOUTHERLY SOUTHEAST corner and PLACE OF BEGINNING of this description;

THENCE, in a Northerly direction along and with the West R.O.W. line of Terry Street, a distance of approximately 500 feet to a point in the South R.O.W. line of Linden Street, and being the Northeast corner of Block 233, of said Smith and Wood Division, and being an INTERIOR corner of this description;

THENCE, in an Easterly direction along and with the South R.O.W. line of Linden Street, a distance of approximately 3,560 feet to a point in the existing Rockport City Limits line and being the common corner of Lots 8 and 9, Block 244, of said Smith and Wood Division and being the most EASTERLY SOUTHEAST corner of this description;

THENCE, in a Northerly direction, following the existing Rockport City Limits line, crossing Linden Street and up the mid Block line of Blocks 262, 297, and fractional Block 321, of said Smith and Wood Division, a distance of approximately 1,220 feet to a point in the North boundary line of said fractional Block 321 and being the NORTHEAST corner of this description;

THENCE, in a Westerly direction, following the existing Rockport City Limits line, and along and with the North boundary line of fractional Blocks 321, 322, and 323, of said Smith and Wood Division, a distance of approximately 725 feet to a point in the Northeasterly R.O.W. line of Texas State F.M. Road No. 2165 (Pearl Street) and being an EXTERIOR corner of this description;

THENCE, in a Southeasterly direction, following the existing Rockport City Limits line, along and with the Northeasterly R.O.W. line of Texas State F.M. Road No. 2165, a distance of approximately 762 feet to a point on the existing Rockport City Limits line at the intersection of the Northerly R.O.W. line of Cherry Street with the Northeasterly R.O.W. line of Texas State F.M. Road No. 2165 (Pearl Street) for an INTERIOR corner of this description;

THENCE, in a Westerly direction, following the existing Rockport City Limits line, and along and with the North R.O.W. line of Cherry Street, a distance of approximately 875 feet to a point in the East R.O.W. line of Litron Street and being an INTERIOR corner of this description;

THENCE, in a Northerly direction, following the existing Rockport City Limits line, along and with the East R.O.W. line of Litron Street, a distance of approximately 605 feet to a point in the South boundary line of a 31.835 acre tract, called Memorial Park, to a point for an EXTERIOR corner of this description;

THENCE, in a Westerly direction, following the existing Rockport City Limits line, along and with the South boundary line of said 31.835 acre tract, a distance of approximately 1,065 feet to point in the West R.O.W. line of Fuqua Street and being in the East boundary line of fractional Block 328, of said Smith and Wood Division, and being an INTERIOR corner of this description;

THENCE, in a Northerly direction, following the existing Rockport City Limits line, along and with the West R.O.W. line of Fuqua Street, a distance of approximately 171 feet to a point for the Northeast corner of said fractional Block 328, and being an EXTERIOR corner of this description;

THENCE, in a Westerly direction, following the existing Rockport City Limits line, an along and with the North boundary line of said fractional Block 328, a distance of approximately 86 feet to a point in the Easterly boundary of a 10.0 acre tract conveyed to the City of Rockport, as described under Clerk's File Number 183696, Public Records of Aransas County, Texas, and being an INTERIOR corner of this description;

THENCE, in a Northerly direction, following the existing Rockport City Limits line, along and with the Easterly boundary of said 10.0 acre tract, a distance

of approximately 667 feet to a point for the Northeast corner of said 10.0 acre tract, and being in the South boundary line of the C.H. Moore Subdivision, as shown on plat of record in Volume 1, Page 22, Plat Records of Aransas County, Texas, and being an EXTERIOR corner of this description;

THENCE, in a Westerly direction, following the existing Rockport City Limits line, along and with the South boundary line of said C.H. Moore Subdivision, a distance of approximately 1,230 feet to a point for an INTERIOR corner of this description;

THENCE, in a Northerly direction, following the existing Rockport City Limits line, along and with the South boundary line of said C.H. Moore Subdivision, a distance of approximately 172 feet to a point for an EXTERIOR corner of this description;

THENCE, in a Westerly direction, following the existing Rockport City Limits line, along and with the South boundary of said C.H. Moore Subdivision, a distance of approximately 1332 feet to a point in the West boundary of Block 11 of the North Bellevue Subdivision, according to the plat recorded in Volume 1, Page 26, Plat Records of Aransas County, Texas, and being an EXTERIOR corner of this description;

THENCE, in a Southerly direction, along and with the Westerly boundary of Block 11 of said North Bellevue Subdivision, a distance of approximately 170 feet to a point in the East R.O.W. line of Traylor Street and being an INTERIOR corner of this description;

THENCE, in a Westerly direction along the South boundary line of said C. H. Moore Subdivision and North boundary of the North Bellevue Subdivision a distance of approximately 465 feet to a point on the Northerly terminus of Steart Street and Northeast corner of Fractional Block 9 of said North Bellevue Subdivision, and being the NORTHWEST corner of this description;

THENCE, in a Southerly direction, along and with the Westerly R.O.W. line of Steart Street a distance of approximately 388 feet to a point in the South R.O.W. line of Bay View Street, and being the Northeast corner of Block 2 of the North Bellevue Subdivision and an EXTERIOR corner of this description;

THENCE, in an Easterly direction, along and with the South R.O.W. line of Bay View Street, a distance of approximately 332 feet to a point for the Northeast corner of Block 3 of the North Bellevue Subdivision and being on the Westerly R.O.W. line of Traylor Street for an INTERIOR corner of this description;

THENCE, in a Southerly direction along and with the common East Boundary of Block 3 of the North Bellevue Subdivision and the Westerly R.O.W. line of Traylor Street a distance of approximately 500 feet to a point for the Southeast corner of said Block 3 and being the intersection of the Northerly R.O.W. line of Novice Street with the Westerly R.O.W. line of Traylor Street for an EXERIOR corner of this description;

THENCE, in an Easterly direction along and with the Northerly R.O.W. line of Novice Street a distance of approximately 735 feet to a point on the Easterly R.O.W. line of Burton Street (as it exists on the ground) and being on the Westerly boundary of a 19.788 acre tract conveyed to the City of Rockport under Clerk's File No. 305920, Property Records of Aransas County, Texas, with said point being an INTERIOR corner of this description;

THENCE, in a Southerly direction and following the common Easterly line of Burton Street (as it exists on the ground) with the Westerly boundary of said 19.788 acre tract a distance of approximately 717 feet to a point for the Southwest corner of said 19.788 acre tract and being an EXTERIOR corner of this description;

THENCE, in an Easterly direction along and with the Southerly boundary of said 19.788 acre tract a distance of approximately 300 feet to a point for the most Southerly Southeast corner of said 19.788 acre tract and being an INTERIOR corner of this description;

THENCE, in a Southerly direction along and with the Westerly boundary of Fractional Block 274, a/k/a Block L and Fractional Block 232, a/k/a Block K a distance of approximately 998 feet to a point on the Southerly R.O.W. line of Alamito Street with said point being also the Northwest corner of Fractional Block 221, a/k/a Block J of the Smith and Wood Division with said point being the most SOUTHERLY SOUTHWEST corner of this description;

THENCE, in an Easterly direction along and with the Southerly R.O.W. line of Alamito Street a distance of approximately 460 feet to the PLACE OF BEGINNING and containing approximately 176 acres or 7,679,270 square feet of land more or less.

Any questions concerning this matter should be directed to Amanda Torres, Community Planner, at (361) 790-1125 or communityplanner@cityofrockport.com.

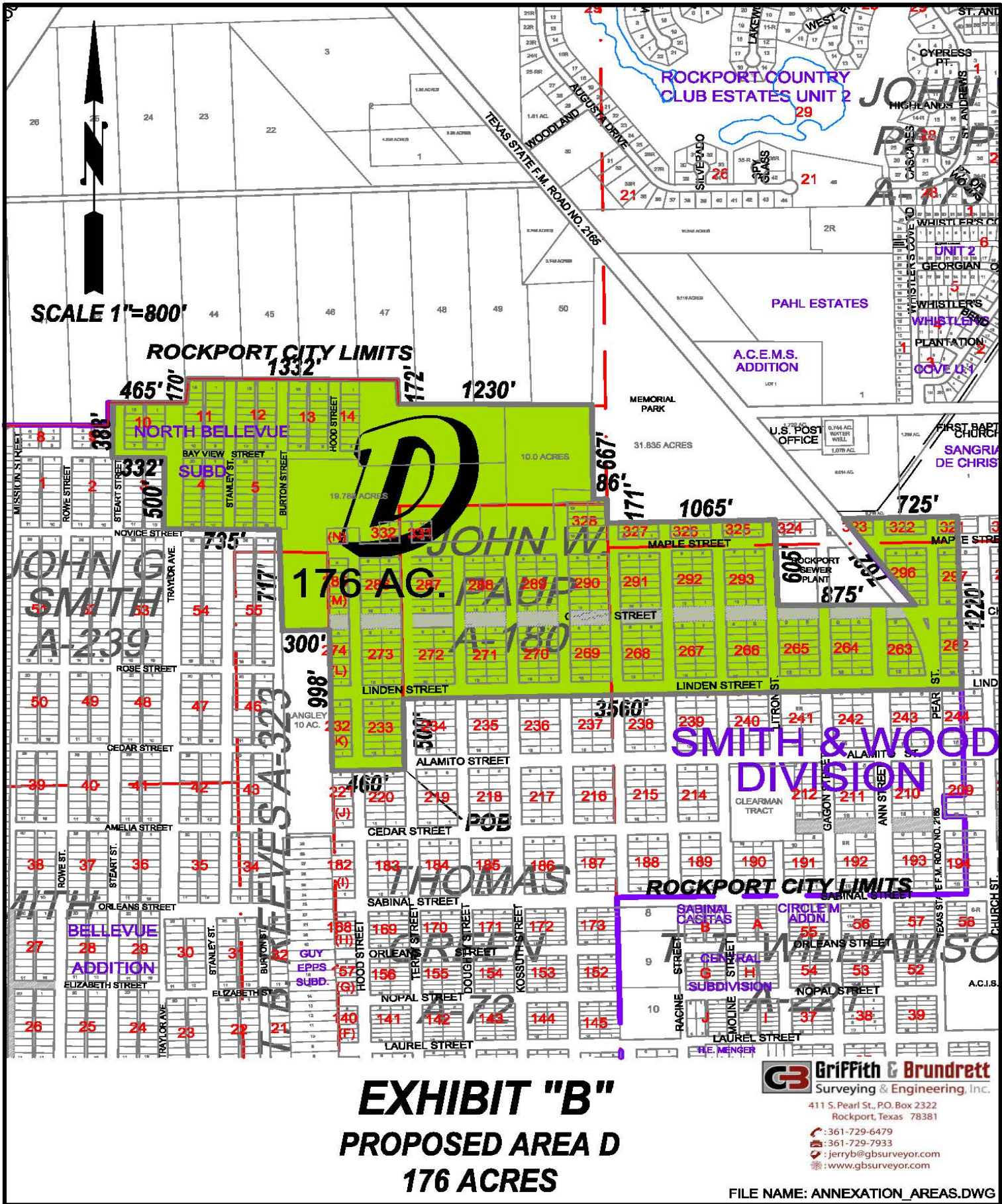


EXHIBIT "B"
PROPOSED AREA D
176 ACRES

G **Griffith & Brundrett**
 Surveying & Engineering, Inc.
 411 S. Pearl St., P.O. Box 2322
 Rockport, Texas 78381
 ☎ : 361-729-6479
 ☎ : 361-729-7933
 ✉ : jerryb@gbsurveyor.com
 🌐 : www.gbsurveyor.com